

Development of Silicon Photo Multiplier, Associated Electronics and its Applications

Shashikant R. Dugad

For SiPM Group

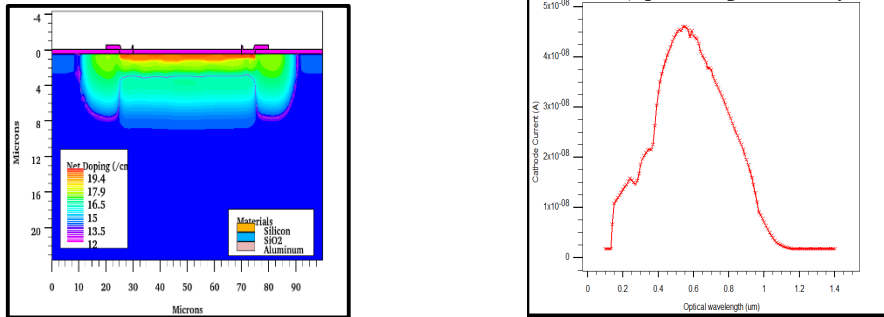
**(V.G. Achanta, S.R. Dugad, S. Duttagupta, C.S. Garde,
S.K. Gupta, S.S. Prabhu, R.A. Shukla)**

DHEP Annual Meeting

08 May 2018

Simulation, Fabrication and Characterization of SiPM

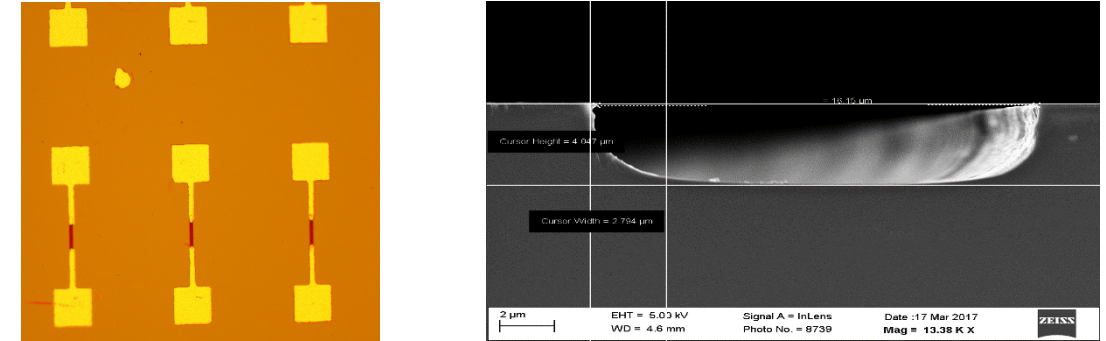
Design and Simulation of an SiPM



- Extensive simulation to design the optimized SiPM
- Process level simulations with foundry inputs
- Fabrication will start soon

Presented at ICEE 2016, IIT Bombay

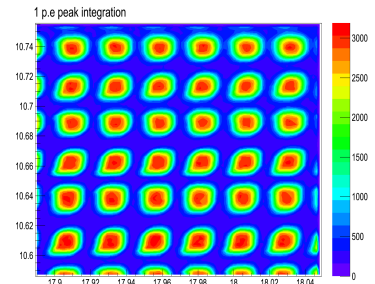
Fabrication Activities: Micro-resistors and Deep Trenches



- High-precision micro resistors required for avalanche quenching in SiPM
- Trenches required for proper isolation between pixels.

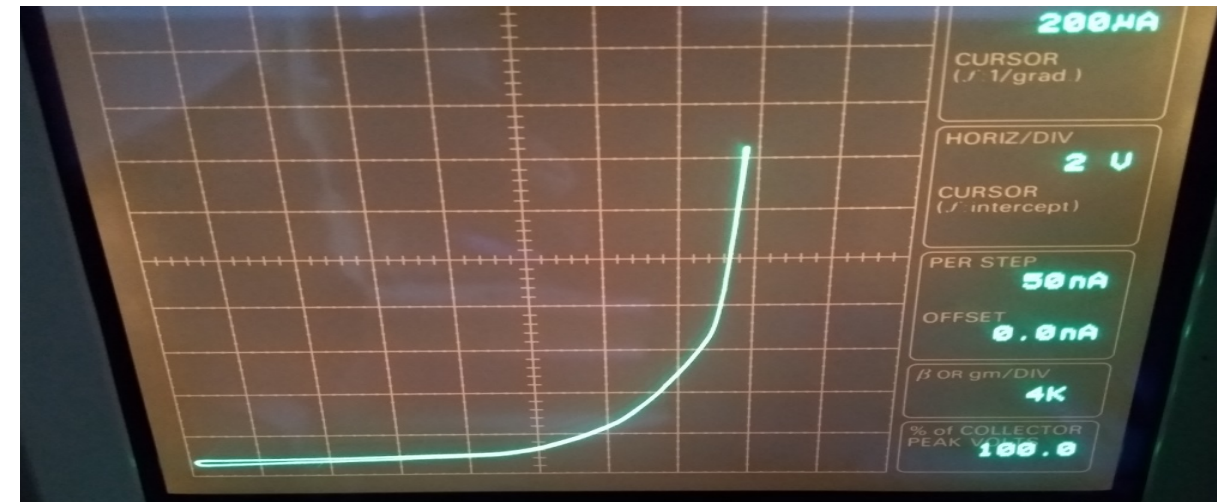
Presented at ICEE 2016, IIT Bombay

Development of Micron Resolution Optical Scanner

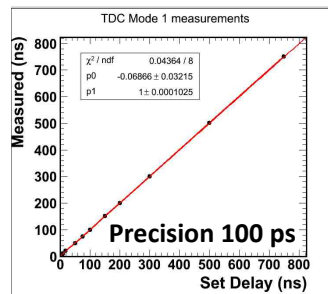
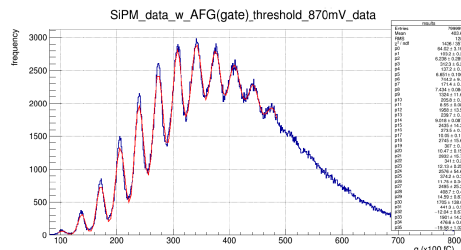
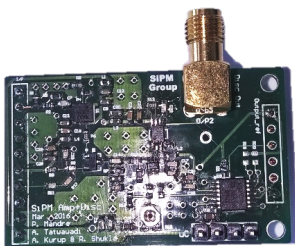


- Enabling optical scanning of Silicon sensors at microscopic level
- Complete surface of SiPM is scanned with tightly focused Laser beam (2 μm)

Review of Scientific Instruments 85, 023301 (2014); doi: 10.1063/1.4863880

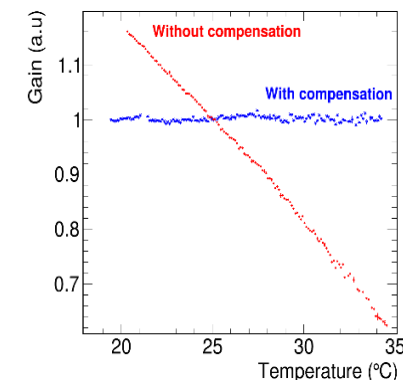
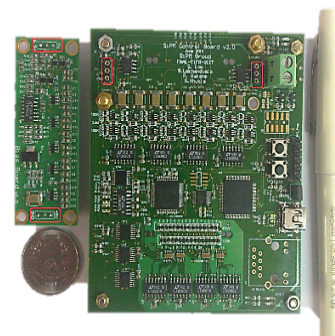


Development of High Speed Amplifier, Discriminator and TDC



- Compact, high speed amplifier discriminator module
- TDC: High precision (100 ps) timing measurement achieved at high event rate.
- Complete Vertical Slice for SiPM readout developed !

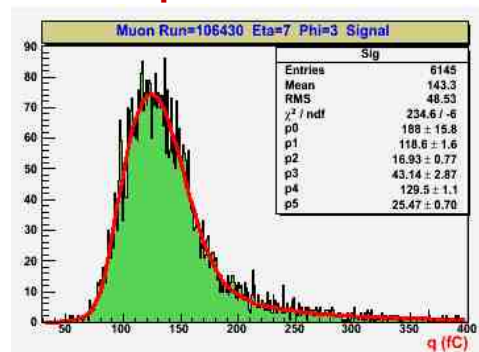
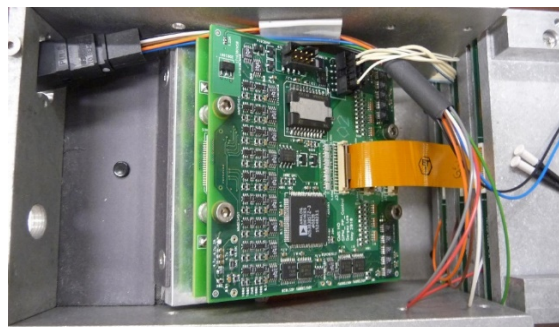
Temperature Compensated Programmable Power Supply for SiPM



- ✓Negates SiPMs large temperature dependence on Gain.
- ✓Gain stabilized to ~0.5% over 15°C

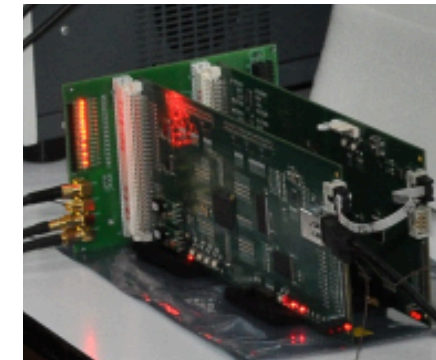
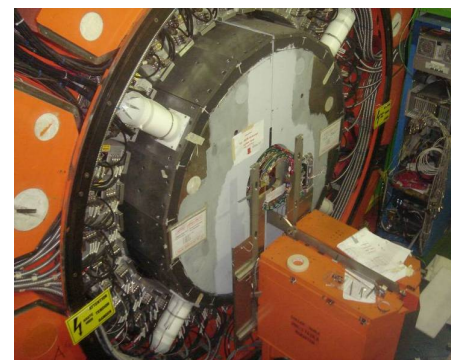
Review of Scientific Instruments 87, 015114, 2016

HO Upgrade with SiPM for CMS Experiment



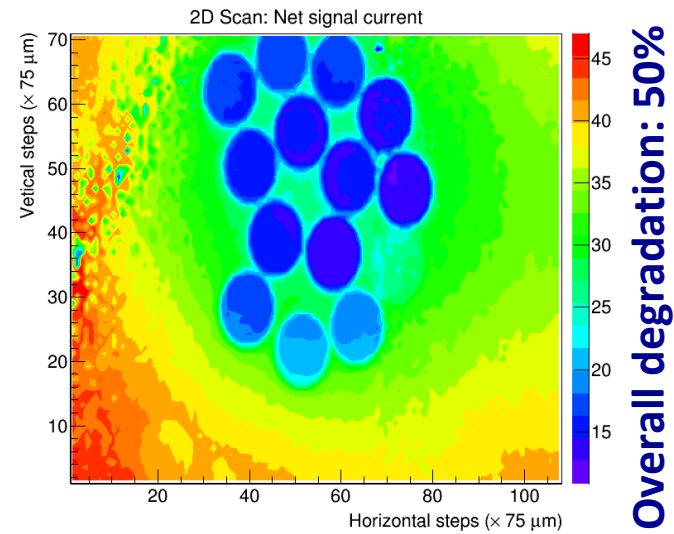
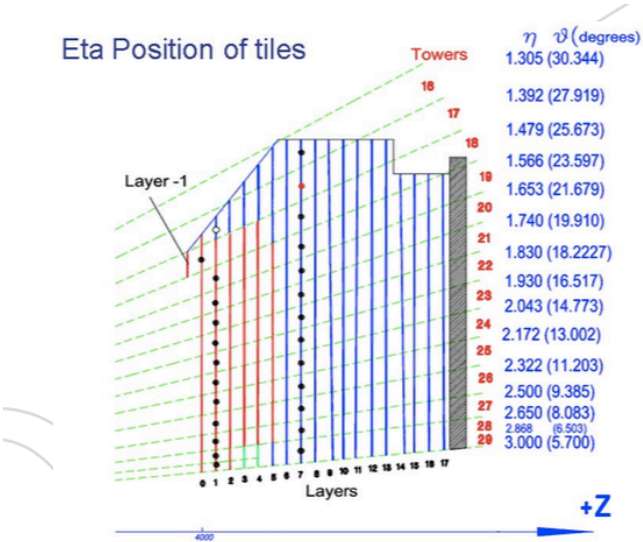
- Validation of SiPM for CMS environment, Installation and Commissioning
- Fabrication of 160 SiPM Control Boards in India
- Quality Control of Control Boards and SiPM Boards (160+160) at India

Development of HFRADMON System for CMS Experiment

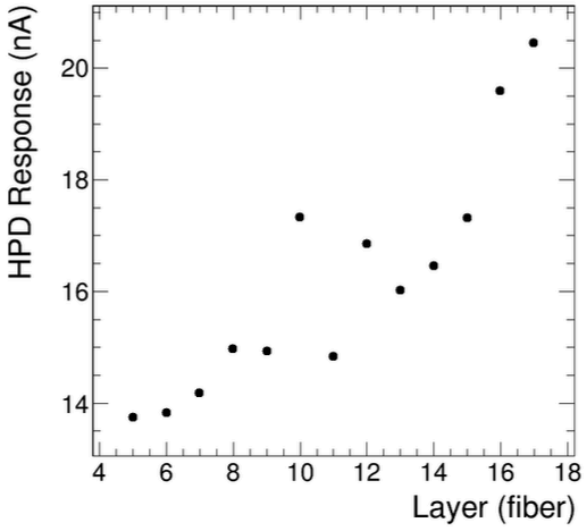


- ✓Long term monitoring of the absorbed dose and neutron flux
- ✓State of the art, high speed FPGA design with Ethernet communication
- ✓Complete in-house design, fabrication and testing
- ✓Successful first prototype: Installed at CERN P5, operational 24x7

Fine Scan of HPD using MROS



CMS DN-18-004



Pixel	Fibers (layers)	Tower	Eta	% Damage
2	5	24f	2.172	22
16	5	26f	2.5	50
14	13	28r	2.868	54
6	3	28f	2.868	56
15	3	29f	3	60

The Compact Muon Solenoid Experiment

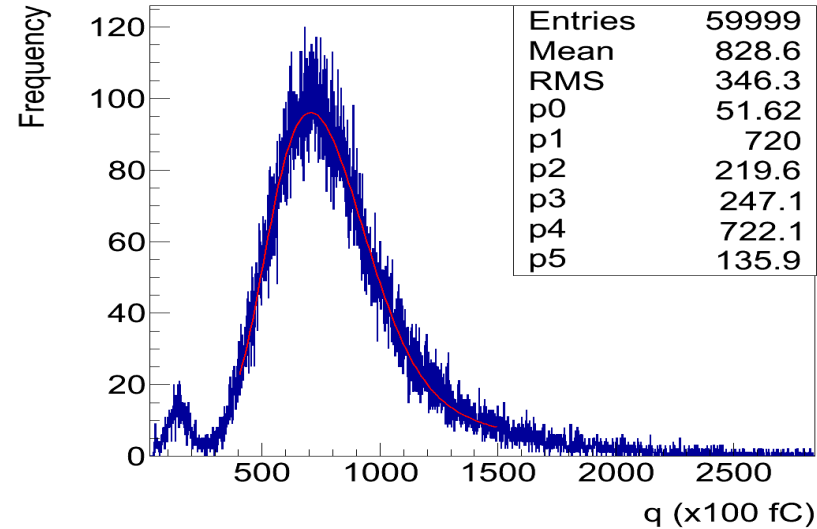
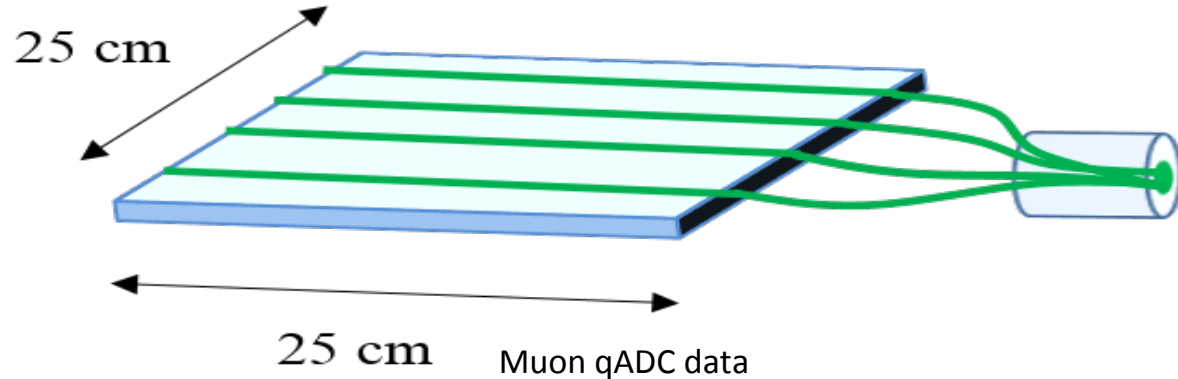
Detector Note

The content of this note is intended for CMS internal use and distribution only

2018/04/26
Head Id: 457311
Archive Id: 448365:457311M
Archive Date: 2018/04/26
Archive Tag: trunk

Ultra Fine Characterization of Hybrid Photo Detectors decommissioned from End-cap (HE) and outer hadron (HO) calorimeter using Microscopic Resolution Optical Scanner

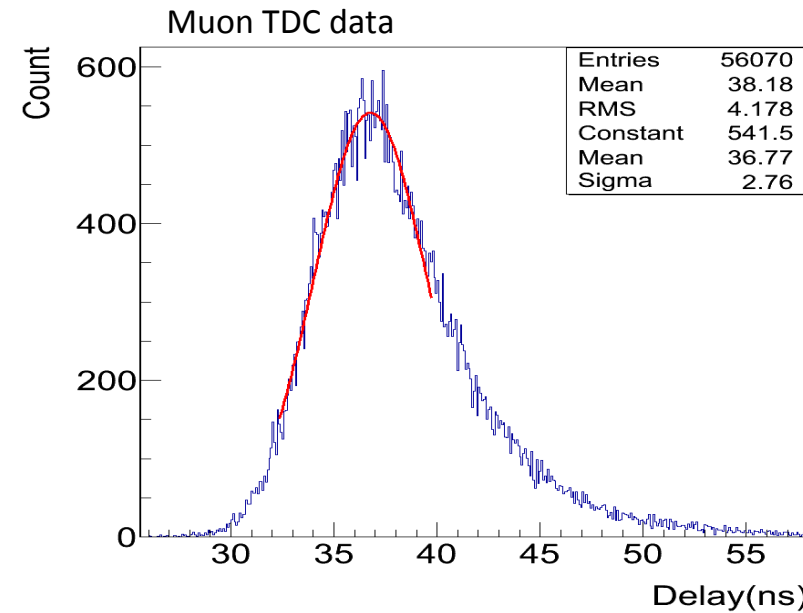
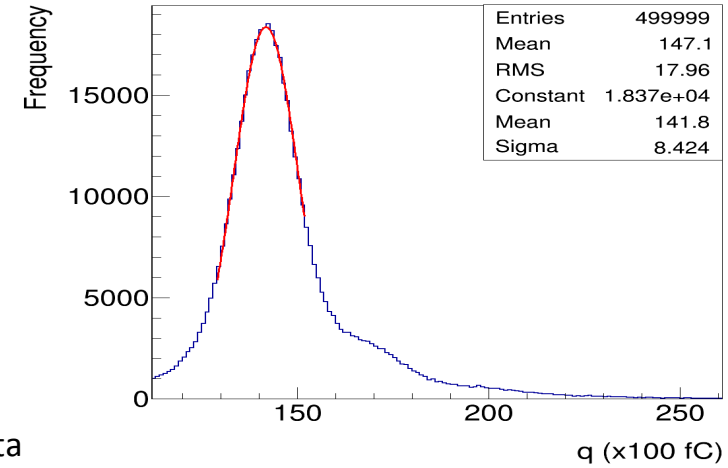
Muon Detection with in-house amplifier, discriminator and TDC



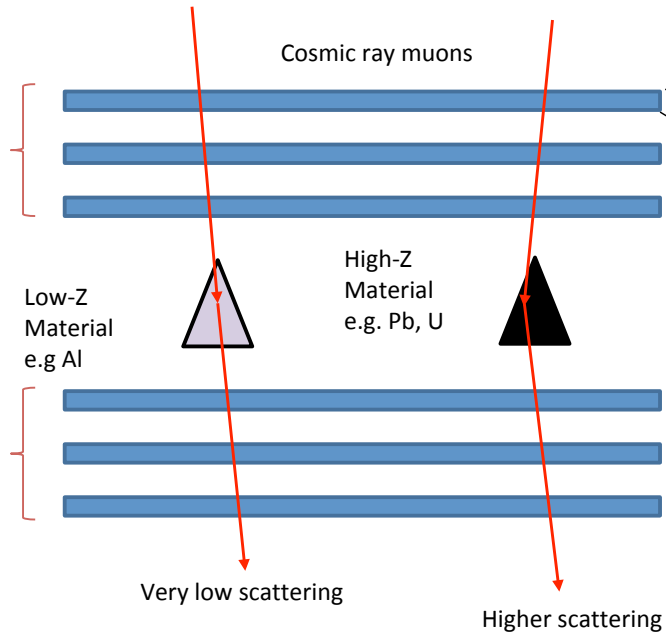
No of p.e = $580/28 \sim 20$

S/B ~ 70

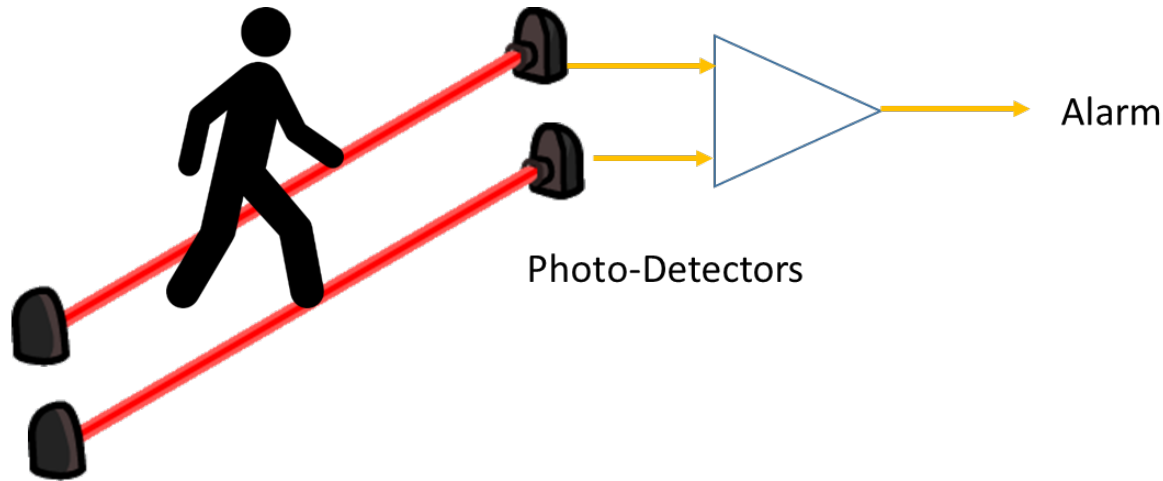
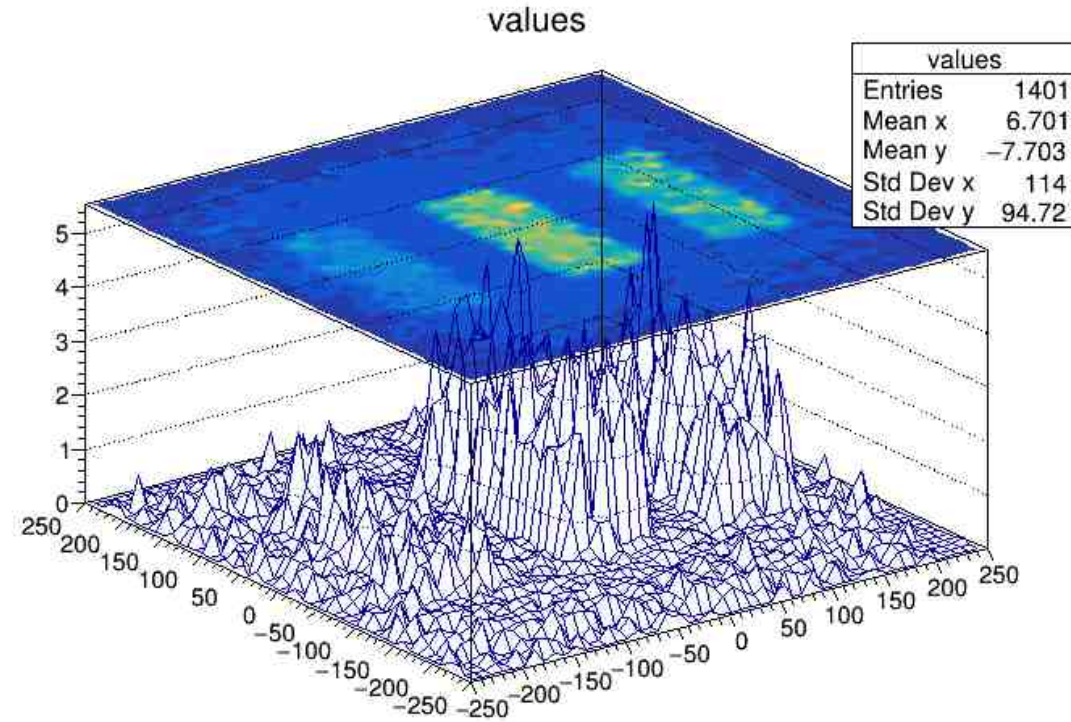
08 May 2018



Muon Tomography Simulation



Application of the SiPM



Laser Wall (Prototype of 50 meter range demonstrated)

05 May 2019

ICHEP, Annual Meeting